

Wangara to Neerabup Terminal

Powering WA's clean energy future

October 2025

Western Power is delivering the network infrastructure needed to achieve the State Government's vision for WA as a world-leading renewable energy powerhouse. The network's transmission lines, and the wind and solar farms they will connect, will form one of the largest infrastructure, technology and construction transformations in Western Australia's history.



What is the project?

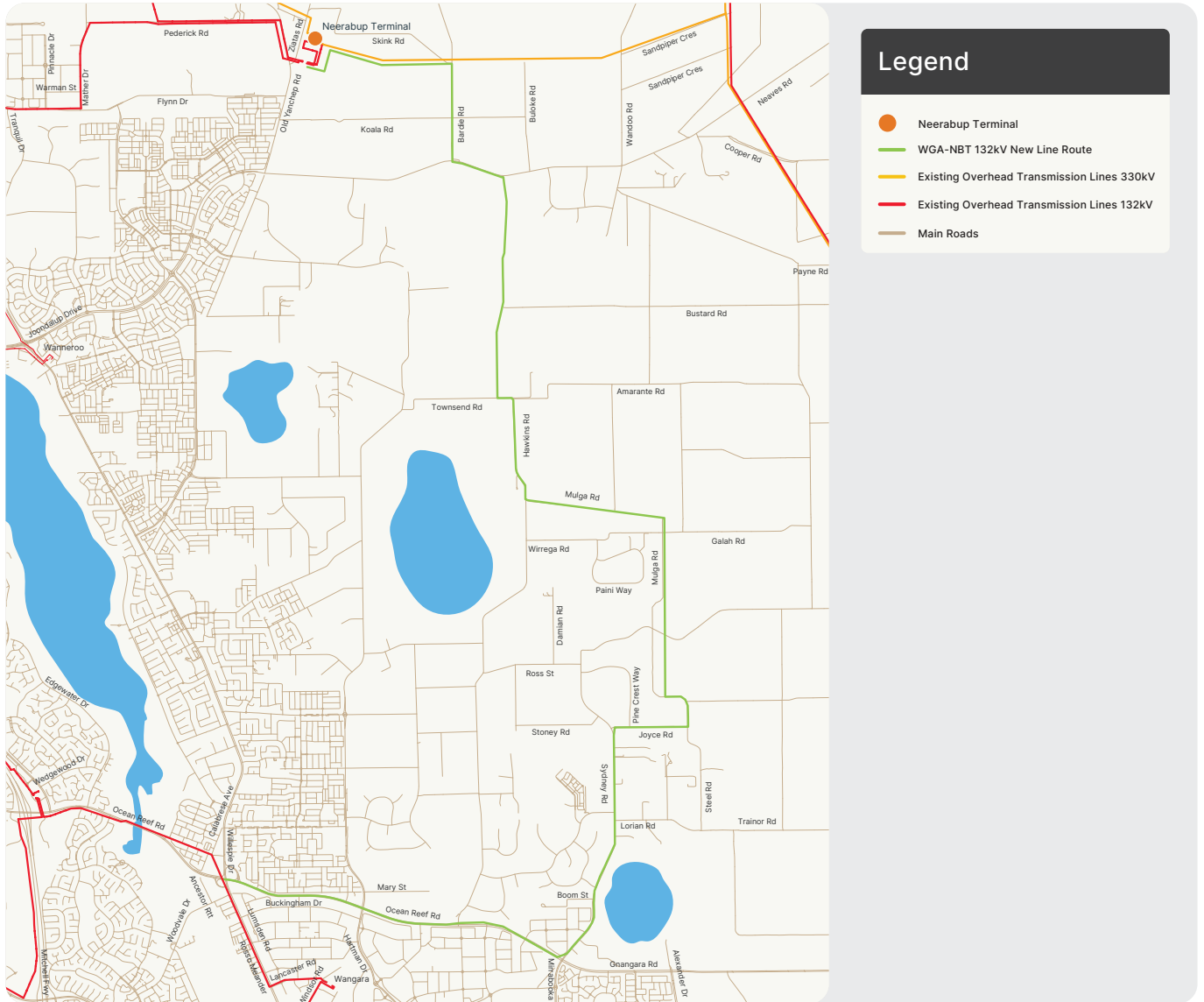
Western Power is building a new 24km overhead 132kV transmission line, to increase the flow of energy between Perth and the Mid West region.

We've engaged and worked with local and State Government agencies and City of Wanneroo to ensure alignment with their planned projects, including the East Wanneroo District Structure Plan, planned transport corridors and future housing growth.

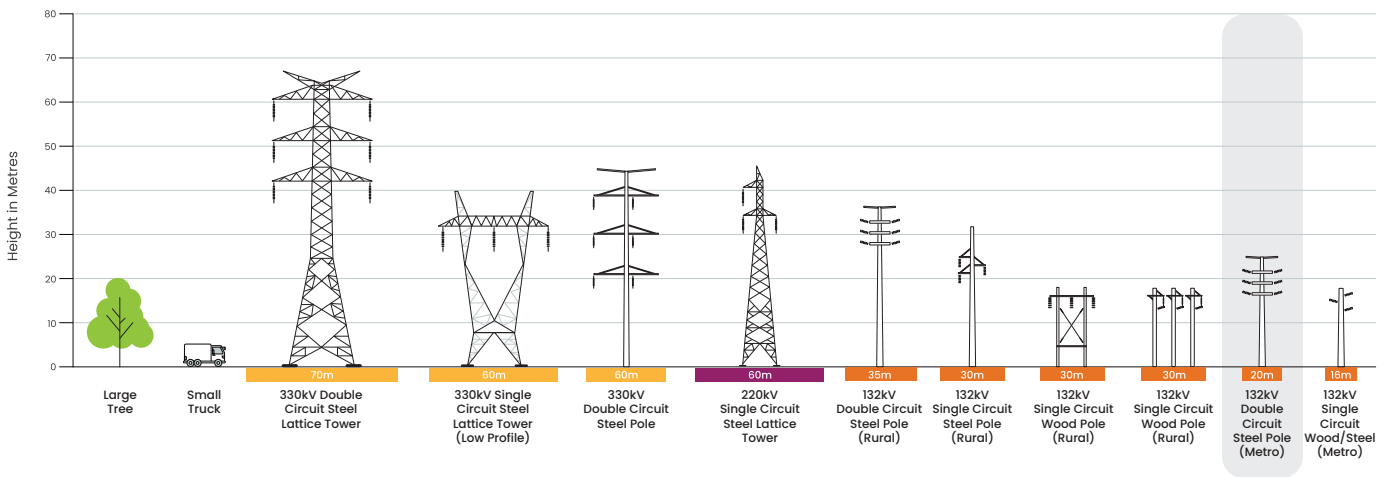
The line route (shown in green on the map) begins at the intersection of Wanneroo and Ocean Reef Roads and ends at Neerabup Terminal (in Pinjar) on Neaves Road. Construction is expected to start in early 2026 and be completed in 2027.

We're committed to keeping you informed every step of the way and will share construction information to minimise any disruptions on you.

Wangara to Neerabup Terminal



The line design aligns with existing network infrastructure in the area and will consist of steel poles. An illustration of this structure is highlighted below:



Project benefits

The project is part of the State Government’s transition to a cleaner energy future. Please visit:

www.wa.gov.au/organisation/energy-policy-wa

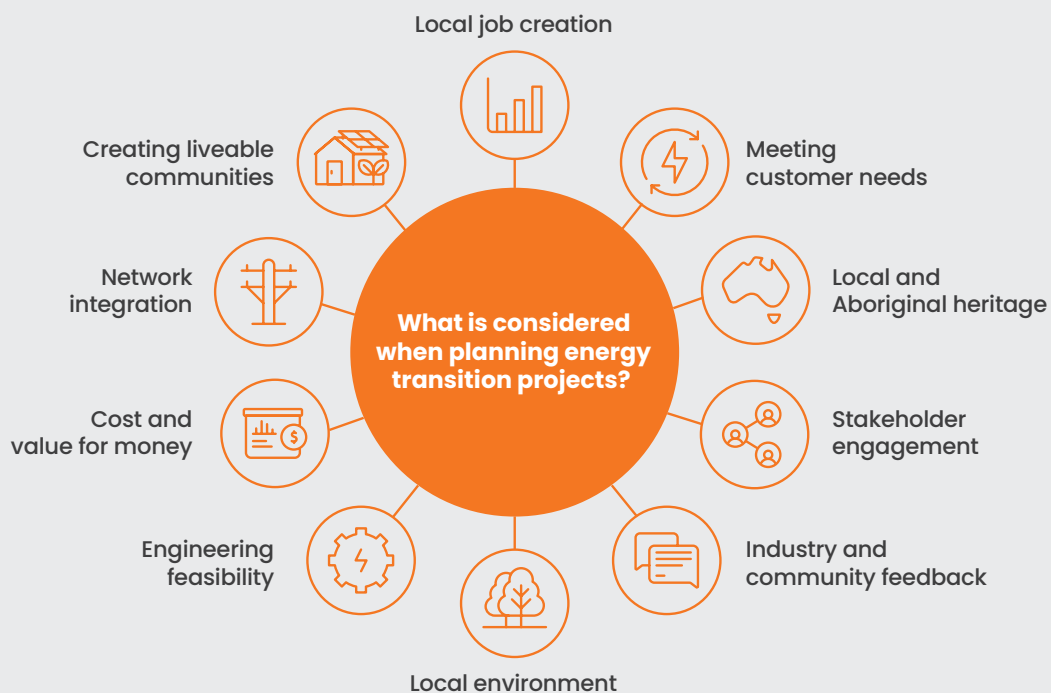


How was this line route selected?

The line route and design was selected to make use of existing infrastructure, road reserves and Crown land to minimise broader community impacts, while balancing affordability and supporting ongoing important local and State Government projects that will benefit the local community.

Consultation was undertaken with key community representatives including City of Wanneroo, Department of Planning, Lands and Heritage (DPLH) and other relevant State Government agencies, with the final alignment based on landowner and stakeholder engagement in July 2025.

Various route options were evaluated using a range of considerations.



Visual amenity and broader community values were paramount considerations in the route and design selection process and included rigorous environmental and cultural heritage assessments and approvals.

Frequently asked questions

What is transmission?

Transmission refers to network infrastructure that carries very large amounts of energy from generation sources to substations where it is then transferred to the distribution network and then delivered to residential and business properties.

What is a transmission easement?

A transmission line easement is a property right that enables our employees and contractors to enter land to undertake maintenance and other work on transmission lines and other associated electricity assets. To protect this property right the easement places limitations on certain land uses and activities over the land that could pose a safety risk to the community to environment or impact the safe operation of the Western Power network.

Common examples of easements include poles or wires on private land and shared driveways. You can find more information on landowner obligations on the Western Power website.

Why not simply upgrade existing infrastructure to increase energy capacity?

While we prioritise using existing infrastructure where possible, upgrades alone aren't always feasible. During planning, we consider future electricity needs, community and industry demand, technical requirements, cost and operational needs. We undertake a rigorous assessment to balance these factors and ensure the best option for the community. The result is a combination of new construction and targeted upgrades to existing assets.

How does Western Power ensure safety with regards to EMF?

Electric and Magnetic Fields (EMF) are carefully considered in the planning, location and operation of Western Power network assets. We are guided by Australian and international health authorities and take a precautionary approach in line with the Energy Network Australia EMF Management Handbook (www.energynetworks.com.au/resources/factsheets/emf-management-handbook). This includes applying industry best practice methods to our engineering and design solutions to reduce or mitigate EMF exposure.

You can find information on Electric Fields and Magnetic Fields and their occurrence on the Australian Radiation Protection and Nuclear Safety Agency (ARPANSA) website.

Why is it necessary to upgrade the metropolitan electricity network to connect new renewable energy generation outside of Perth?

More renewable energy sources are required to meet growing community and industry demand. The most abundant renewable resources such as wind are often located outside the metro area in our regions. To transport clean energy from these regions requires essential upgrades to the existing network as well as building new connecting infrastructure. This will ensure the network continues to meet growing energy needs while remaining robust and reliable.

For more information please visit www.wa.gov.au/organisation/energy-policy-wa

More information

Western Power is committed to working with local communities and stakeholders and we'll regularly share project information and updates.

To stay informed, sign up to receive project news.

westernpower.com.au/cleanenergylinknorth

Scan
to learn
more



OWNED BY
the people
of WA